

S2108 OPTICAL NETWORK TESTER



Cloud Platform

Data upload and remote control



7 inch Outdoor Enhanced

Multi-points color touch screen



iONM

Intelligent optical link analysis



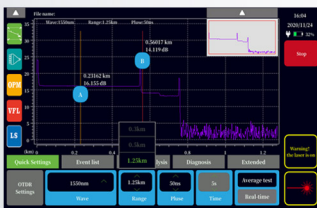
RJ45 Digital Radar Tracker

Broadband install and maintain



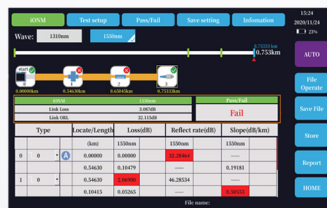
Wireless Transmission

WiFi, Bluetooth, 4G & IOT tools



OTDR

Modify parameters without stopping, one-click to generate PDF test reports



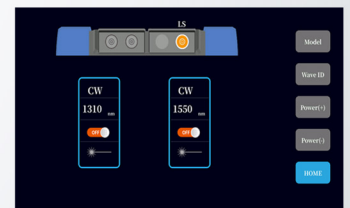
iONM

Custom setting pass/fail threshold, judge the connection status automatically



OPM

Support frequency/wavelength identification and data acquisition



OLS

Multiple output mode, output power -5dBm to +3dBm adjustable

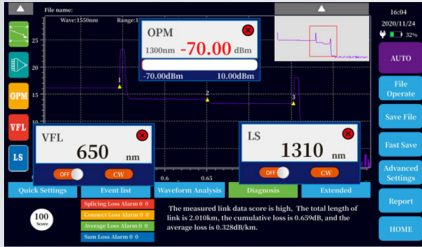
Introduction

Saluki S2108 series optical network tester is one intellignet instrument with cloud wireless transmission. It is integrated 18 functions: OTDR, Intelligent optical network map (iONM), LS, VFL, OPM, Optical end face detection, Multi-core measurement, Optical loss test, File management, Data wireless transmission, RJ45 cable tracker, Laser ranging, Remote assistance, One-key repair, Camera, Bluetooth, GPS&BDS (on developing).

Applications

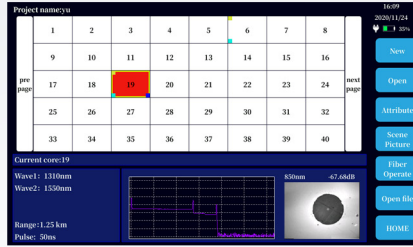
- ※ FTTx test
- ※ Lab and factory test
- ※ Live fiber troubleshoot
- ※ Broadband install and maintain
- ※ CATV/ LAN/ Metro/ Access network test

More Functions



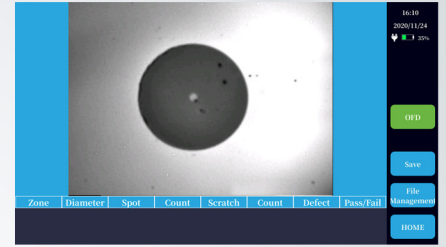
■ OTDR

OPM/LS/VFL run in the background, multi-tasks simultaneous operation



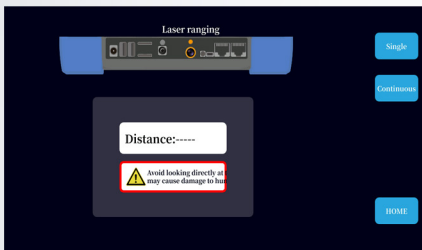
■ Multi-core Test

Establish optical cable project, support up to 2000 cores data management



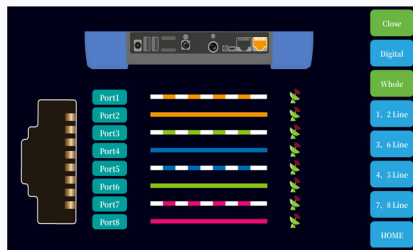
■ OFD

Simple detection operation, generate .bmp picture, optional USB microscope



■ Laser Ranging

Maximum length 40m, ±2mm measuring accuracy



■ RJ45 Cable Tracker

Digital radar tracker, strong anti-jamming ability, support online tracking and by line pair



■ Cloud Platform

Support cloud storage/analysis, remote assistance, one-key repair

Technical Specifications

Model	S1	S3	S4	S5	P1F1	P1F2	P2F1	P2F2	T1F1	T1F2	T2F1	T2F2	M1	SM1	SM2
Fiber Type	SM												MM	SM/MM	
Wavelength (nm)	1310/1550				1625		1650		1310/1550/1625		1310/1550/1650		850/1300	850/1300/1310/1550	
Max. Dynamic Range (dB)	37/35	40/38	42/40	45/43	38	40	37	40	37/35/35	40/38/38	37/35/35	40/38/38	26/28	26/28/35/33	26/28/38/36
Event Blind Zone	0.8m												1.5m	1.5m/0.8m	
Attenuation Blind Zone	5m												6m	5m / 6m	
Measurement Range	100m/300m/500m/1.25km/2.5km/5km/10km/20km/40km/80km/160km/260km/420km														
Pulse Widths	3ns/5ns/10ns/20ns/30ns/50ns/80ns/100ns/200ns/300ns/500ns/800ns/1us/2us/3us/5us/8us/10us/20us														
Sampling Points	3.2k - 320k														
Loss Accuracy	≤0.05dB/dB														
Refresh Rate	10Hz (max.)														
Connector	FC/UPC (Interchangeable SC, ST)														
Electronic Report	PDF reports can be generated on the device, and transmitted to the wireless terminal via Bluetooth														
Data Storage	Internal: 8GB (≥200,000 curves)														
Data Interface	USB-A (2), Mini-USB (1), 1000M Ethernet, RJ45 Tracker port, 3.5mm Audio port														
Display & Size	7 inch 1024*600 IPS TFT-LCD, multi-point touch screen									252mm*180mm*72mm & 1.5kg					