

S2106X SERIES OPTICAL TIME DOMAIN REFLECTOMETER



7 Function Modules
Meet all your test



7 inch
Capacitive touch screen



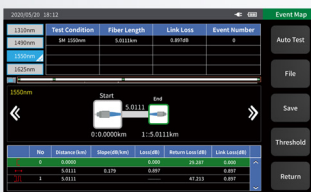
iONM
Intelligent optical network map



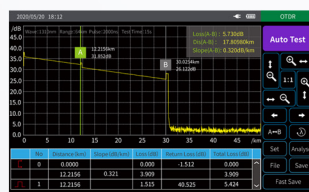
Signal detection
Effective protection of APD



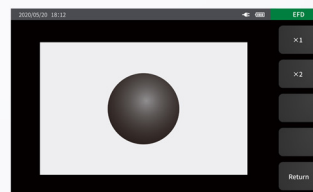
SOR Batch processing
Data fast processing



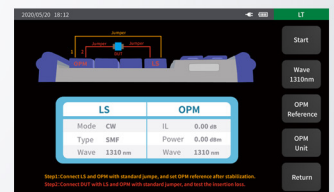
Event Map



OTDR



OFD



OLT

Introduction

Saluki S2106X series optical time domain reflectometer is an upgraded version with larger display, higher operation speed and more friendly UI. Adopt 7 inch color capacitive touch screen, 20 hours long standby, multi-functional integration can help customers effectively solve the field test and maintenance.

Applications

- ※ FTTx test
- ※ Lab and factory test
- ※ Live fiber troubleshoot
- ※ CATV/ LAN/ Metro/ Access network test

Product Features

High performance test

- Dynamic range up to 45dB
- Less than 0.8m ultra short event blind area
- Automatic and manual measurement setting
- Link optical nondestructive testing
- Signal optical detection function (Effective protection of APD)

Convenient operation

- 7 inch color LCD capacitive touch screen
- One button automatic test
- More friendly operation UI design
- Ethernet remote control function
- Multiple wavelength simultaneous testing
- Unique diagnostic function for test results

High reliability

- 20h super long standby
- 1.5 meter drop test
- Waterproof and splash proof
- Operation temperature -10°C to 50°C

Multifunctional test - Standard configuration

- OTDR
- Stable laser source (LS)
- Visual red light fault location (VFL)
- Optical power meter (OPM)

Multifunctional test - High configuration

- Intelligent optical network map (iONM)
- Optical fiber end face detection (OFD)
- Optical loss test (OLT)
- Fault location

Convenient data processing

- Automatic data storage
- SOR batch processing
- Remote upgrade function

Technical Specifications

| Model | S2106X-S1 | S2106X-S2 | S2106X-S3 | S2106X-S4 | S2106X-T1 | S2106X-T2 | S2106X-F1 | S2106X-M1 | S2106X-SM1 |
|---------------------------|---|-----------|-----------|-----------|------------------------------|------------------------------|---|------------------|--|
| Fiber Type | SM | | | | | | | MM | SM/MM |
| Wavelength | 1310nm/1550nm | | | | 1310nm/ 1490nm/ 1550nm | 1310nm/ 1550nm/ 1625nm | 1310nm/ 1490nm/ 1550nm/ 1625nm | 850nm/ 1300nm | 850nm/ 1300nm/ 1310nm/ 1550nm |
| Max. Dynamic Range | 35/33dB | 38/36dB | 42/40dB | 45/43dB | 37/35/35dB | 37/35/35dB | 37/35/35/35dB | 26/28dB | 26/28/35/33dB |
| Event Blind Zone | 1m | 0.8m | 0.8m | 0.8m | 0.8m | 0.8m | 0.8m | 1m | 1m |
| ATT Blind Zone | 6m | 6m | 6m | 6m | 6m | 6m | 6m | 6m | 6m |
| Test Range | 500m/1km/2km/4km/8km/16km/32km/64km/128km/256km | | | | | | | | |
| Pulse Width | 3ns/5ns/10ns/30ns/50ns/80ns/160ns/320ns/500ns/800ns/1000ns/3000ns/5000ns/8000ns/10000ns/20000ns | | | | | | | | |
| Ranging Accuracy | ± (0.75m + Sampling interval + 0.005% x Test distance) | | | | | | | | |
| Loss Accuracy | ±0.05dB/dB | | | | | | | | |
| Reflection Accuracy | ±3dB | | | | | | | | |
| Sampling Points | 16k - 256k | | | | | | | | |
| Sampling Resolution | 0.05m - 16m | | | | | | | | |
| File Format | SOR standard file format | | | | | | | | |
| Data Storage | Internal: 8GB, External: 4GB | | | | | | | | |
| Data Interface | 2 USB ports, Mini USB, 10M/100M Ethernet | | | | | | | | |
| Optical Interface | FC/UPC (Interchangeable SC, ST) | | | | | | | | |
| Standard VFL Output Power | ≥ 10mW | | | | | | | | |
| Display & Size | 7 inch color LCD capacitive touch screen | | | | | 227mm*160mm*70mm | | | |